

# SPS NEWSLETTER

ONLINE.SLU.EDU



SAINT LOUIS UNIVERSITY  
—  
SCHOOL FOR PROFESSIONAL STUDIES

## April 2024

### In this issue:

Page 1: Introduction

Page 2: About SPS/Using your tuition benefit

Page 3/4: Learn more about our undergraduate Leadership degrees

Page 5/6: Learn more about our online Leadership graduate degrees and certificates

Page 7/8: SPS in the news

Page 9: Upcoming Important Dates



# welcome

Hi! I'm Kim Dondanville, the Strategic Partnerships Coordinator at Saint Louis University's School for Professional Studies (SPS). As your point of contact, I am here to assist with any inquiries you may have regarding our programs, tuition discounts, or any other concerns. My objective is to make your transition back to school as easy as possible. Please don't hesitate to contact me for any assistance as you begin your educational journey with SPS.

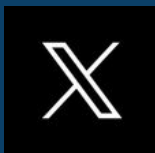


Kim Dondanville, M.A,  
kimberly.r.dondanville@slu.edu

**BOOK NOW**



### Let's keep in touch!



Book a meeting with me!

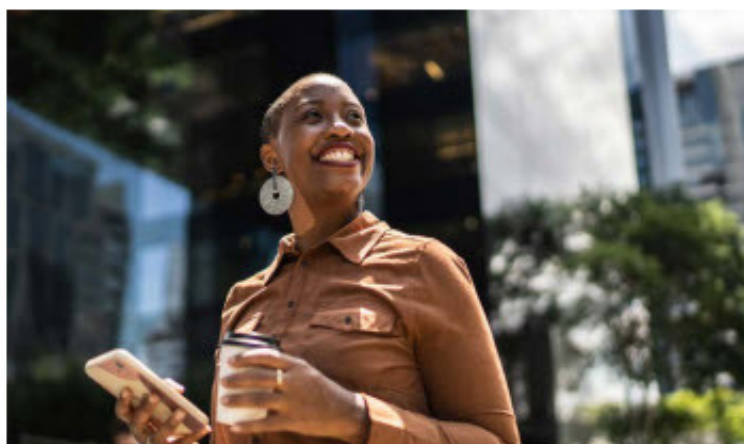
# About SPS

Saint Louis University's School for Professional Studies has been offering students dynamic, skills-based programs with the flexibility they need for more than 60 years. Find the SLU online or hybrid program that fits your goals, your life and your lifelong pursuit of greater truth.

**As a corporate partner of SPS, you are entitled to a tuition discount, along with many other benefits SLU has to offer.**

## Grow Your Career with Employer Education Benefits

**Take your career to the next level with in-demand education designed for working adults at Saint Louis University.**



### STAY AHEAD OF THE COMPETITION

**Earn a career-relevant degree or certificate from a university that supports your success.**

Since 1963, the School for Professional Studies at Saint Louis University (SLU) has been leading the way in education for working adults, with almost 30 years of experience in online instruction.

Earn a nationally recognized, accredited degree or certificate that can help open new opportunities for growth in your career.

#### **Earn an Affordable Degree or Certificate...**

- Employer tuition benefits
- Direct bill or deferred payment options
- Credit for courses you've already taken
- Additional scholarships or financial aid may be available

#### **On Your Schedule...**

- Flexible programs delivered 100% online
- Six, 8-week start terms to choose from
- Programs are structured to accommodate working adults

#### **With the Support You Deserve...**

- Individualized 360-degree student support services
- Direct access to faculty
- Supportive education for adults since 1963

#### **To Grow Your Career.**

- Apply what you learn to your job from day one
- Programs designed by industry experts to teach in-demand skills
- Engage with experienced faculty who work in your field

Don't miss out on your employer benefits.

**LEARN MORE AT [SLU.EDU](https://slu.edu)**



# Learn more about our 100% online Leadership and Organizational Behavior, B. A. program



Katie Devany, M. S.  
Director of Leadership and  
Organizational Behavior

A Bachelor of Arts in Leadership and Organizational Behavior is particularly well suited for students aspiring to administrative, supervisory and leadership positions or for those considering a career change. All courses include experience with the practical application of skills and are taught by faculty who are also working professionals.

## Learning Outcomes for the LOB, B.A.:

- Graduates will be able to analyze data to formulate evidence-based decisions.
- Graduates will be able to apply fundamental competencies from business functions.
- Graduates will be able to evaluate organizational behavior at multiple levels.
- Graduates will be able to apply leadership principles in multiple contexts.
- Graduates will be able to evaluate ethical implications in organizational decision-making.



**Hear directly from our program director on what you can expect from this program!**

Find out more about the LOB, B.A. Program here!!

## Learn more about our 100% online Technology and Leadership, B.S. Degree!

Learn to lead employees to innovate and implement solutions to complex technological challenges in business through the Bachelor of Science in Technology and Leadership program at Saint Louis University's School for Professional Studies.

Coursework in this program combines the study of computer information systems with organizational leadership. By taking courses in both areas, you will be better prepared to lead and manage in complex technological work environments.

### Careers:

- SLU's technology and leadership program combines an organizational leadership program and a technology management program into one well-rounded educational experience.
- Large-scale employers include computer systems design firms, insurance and financial firms, government agencies, business management organizations and manufacturers.



Find out more about the Technology  
and Leadership Program here!!

Learn more about our 100 % online  
Graduate degrees & certificates in Leadership and  
Organizational Development



Steven Winton, Ph.D  
Director of Leadership &  
Organizational Development

With a degree in Organizational Leadership and Development through Saint Louis University's School for Professional Studies, you'll learn the organizational development principles and practices needed to facilitate systemic change and enhance overall effectiveness in your organization. The program will help you strengthen your consulting skills through a combination of coursework, peer interaction and project-based learning.

## SPS Offers three graduate options for Leadership and Development:

### **1) Leadership and Organizational Development, M.A. ([click for more info](#))**

Organizations are searching for professionals capable of facilitating strategic change and who are fluent in designing cross-cultural interventions. Upon graduating from SLU's leadership and organizational development program, students will be ready to navigate complex organizational systems and apply research to develop themselves, their employees and their organizations. Ultimately, through the leadership courses, students will develop a portable set of knowledge and skills that aren't about how to perform their job but about how to be a leader in their current position, future employment and all areas of their life.



## **2) Organizational Development, Post-Baccalaureate Certificate**

(click for more info)

SLU's organizational development post-baccalaureate certificate is for professionals seeking to facilitate strategic change and design OD interventions. Organizational development professionals work in careers focused on change management, human resources, and training and development.

## **3) Organizational Leadership, Post-Baccalaureate Certificate**

(click for more info)

SLU's organizational leadership graduate certificate can be applied to a wide variety of careers. Competencies gained through the certificate are focused on developing a portable set of knowledge and skills that include how to be a leader in your current job, your future job and all areas of your life.

# SPS In the News

## Shifting From Transactional to Relational Interactions With Learners

Justin Smith | Student Engagement Manager, Saint Louis University

Troy Hargrove | Associate Dean of Enrollment Management and Partnerships, Saint Louis University

The  
**evolution**<sup>®</sup>  
A Modern Campus Illumination



SAINT LOUIS UNIVERSITY  
—  
SCHOOL FOR PROFESSIONAL STUDIES

Students today want to find meaning and purpose in every decision they make. So, when they interact with their institution, they want to feel supported and listened to. Institutions must therefore take a transactional approach to student engagement and turn it into something more that makes the student feel like more than just a number. In this interview, Justin Smith and Troy Hargrove discuss their experience with a transactional approach, why it's important for relationship building and how to better engage with learners to keep them.

Troy Hargrove  
Associate Dean of SPS



Justin Smith  
Student Engagement Manager



[Read more about it here!](#)

# SPS In the News

## Fake It Til You Make It: The Overhyped World of Happiness Few happiness interventions show any real effects.

By: Matt Grawitch, Ph.D; Director, Strategic Research at SPS  
Published in Psychology Today, March 2024



**Matt Grawitch, Ph.D.**

Happiness—it’s apparently elusive for a lot of people, given that the happiness industry is worth more than \$11 billion.<sup>1</sup> And, at least in the United States, the pursuit of happiness hasn’t produced much in the way of payoffs, given that happiness has largely fallen (though only mildly so) between 2008 and 2022, at least according to the World Happiness Report (WHR, 2023).<sup>2</sup> There seems to be a bit of a disconnect between the worth of the industry and its effectiveness.

[Read the full article here!](#)



SAINT LOUIS UNIVERSITY  
SCHOOL FOR PROFESSIONAL STUDIES

Psychology Today

Grawitch, M. (2024, March 25). Fake It Til You Make It: The Overhyped World of Happiness. Psychology Today. March 26, 2024, [https://www.psychologytoday.com/us/blog/a-hovercraft-full-of-eels/202403/fake-it-til-you-make-it-the-overhyped-world-of-happiness?fbclid=IwAR0vqicyNGjaRsULsL07D6DmUfIT7GIRIMlpoUip1ByA\\_3pZ1cIETT2OF4o](https://www.psychologytoday.com/us/blog/a-hovercraft-full-of-eels/202403/fake-it-til-you-make-it-the-overhyped-world-of-happiness?fbclid=IwAR0vqicyNGjaRsULsL07D6DmUfIT7GIRIMlpoUip1ByA_3pZ1cIETT2OF4o)



# Want to learn more?



Interested, but not sure where to start? Join one of our virtual informational sessions where we will discuss programs offered at SPS, benefits of being a SLU student, as well as how to maximize your tuition benefit to get your degree for even less.

Also, check out our blog post about [“Six Things You Should Know About Saint Louis University Online Programs”](#).

## Upcoming important dates

**Upcoming Info Sessions:** April 23rd @ 11 am CT. [Register here](#); April 30th @ 12 pm CT. [Register here](#); May 7th @ 1:30 pm CT. [Register here](#).

**Summer 1 Session Start:** May 20th, 2024

**Summer 2 Session Start:** June 17th, 2024

**Fall 1 Session Start:** August 19th, 2024

**Fall 2 Session Start:** October 21st, 2024

**SAVE!  
THE DATE!**

Don't miss out on your employer benefits.

[LEARN MORE AT SLU.EDU](https://slu.edu)

